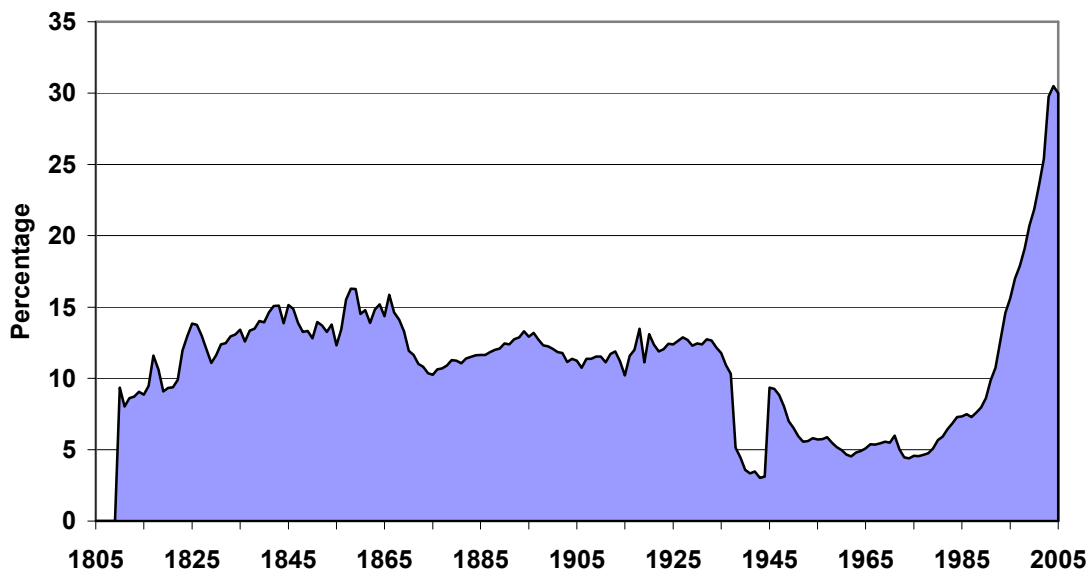


BIRTHS OUT OF WEDLOCK IN THE CZECH REPUBLIC FROM LONG-TERM PERSPECTIVES

Ludmila Fialová

Changes in extra marital fertility in population history of population of Czech Republic during past three centuries can be seen as the reflection of the changes in the nuptiality and marital fertility. Four periods can be distinguished.

Figure 1. Percentage of illegitimate births, Czech Republic 1810-2004 (%)

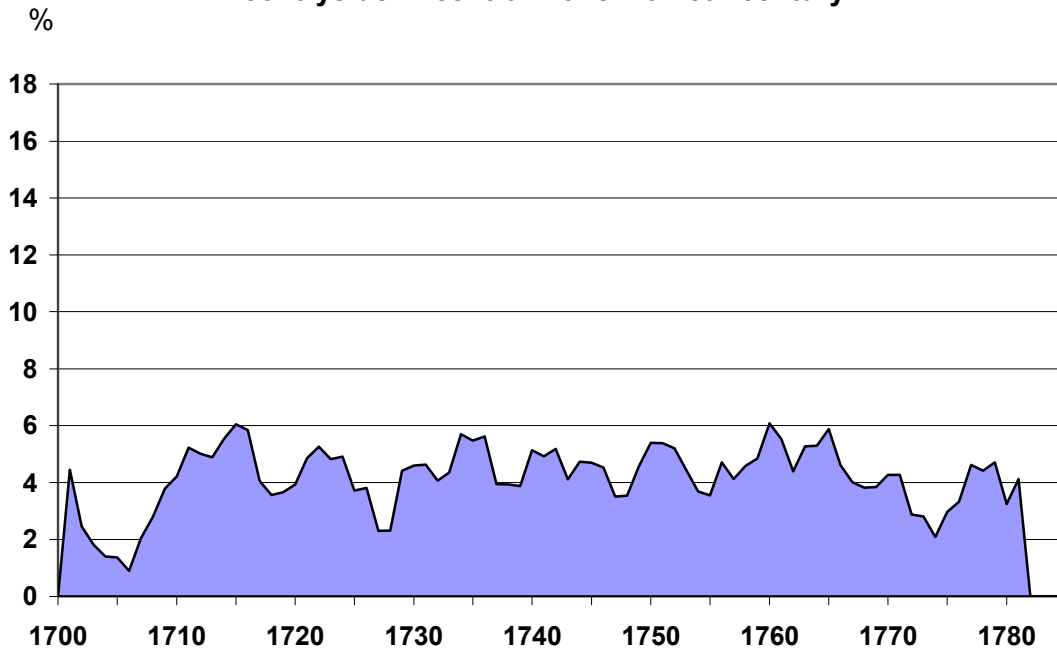


Territory in the time of data (1938-1945 Protectorate Bohemia and Moravia without German population)

1. Period of traditional society before 1830s

It was period with low illegitimate fertility, mainly in countryside. Arranged early marriages and high nuptiality without family limitation decreased extra-marital fertility with only exception of cities with high percentage of females employed as domestic servants, mainly in Prague. Merely because of its size (and the maternity and foundling hospital founded in 1765, destination of many non married pregnant women coming from wide neighborhood) the local circumstances of Prague had national significance. There the city showed rather different level of illegitimacy.

**Figure 2. Percentage of illegitimate births, parish Smečno -
contryside in central Bohemia 18th century**



Three years moving averages

**Figure 3. Percentage of illegitimate births - city of Litoměřice in
northern Bohemia, 18th century**

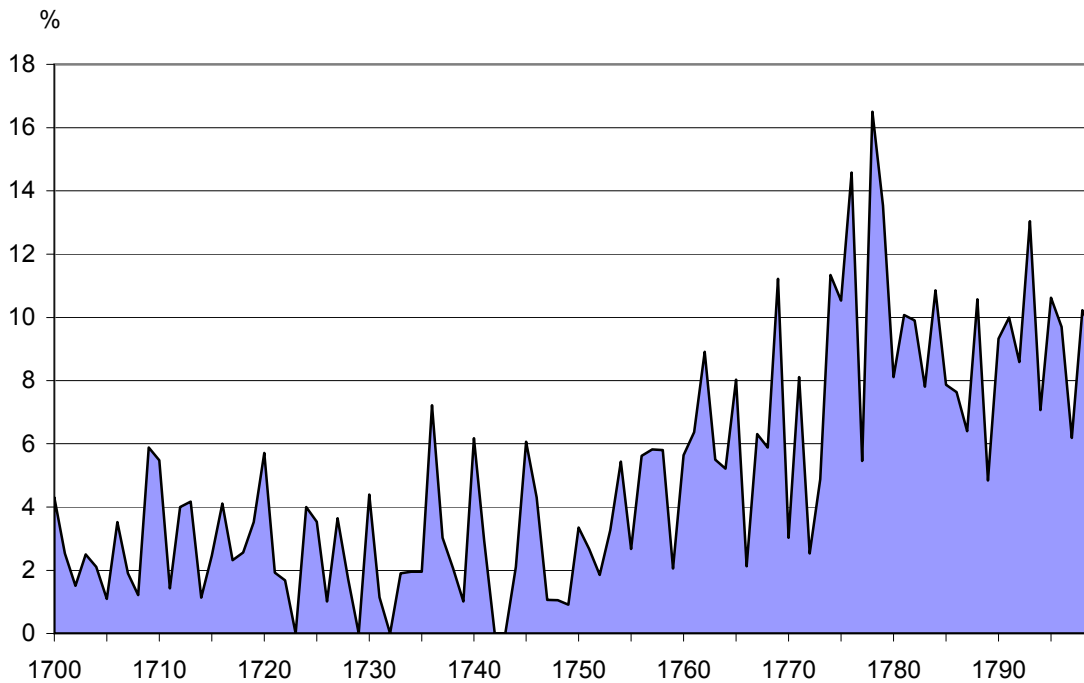
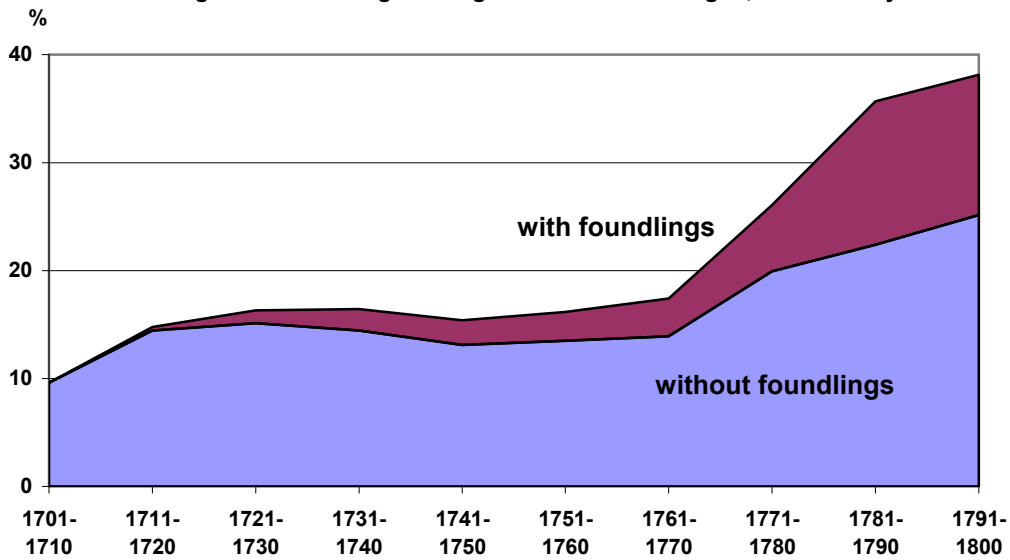


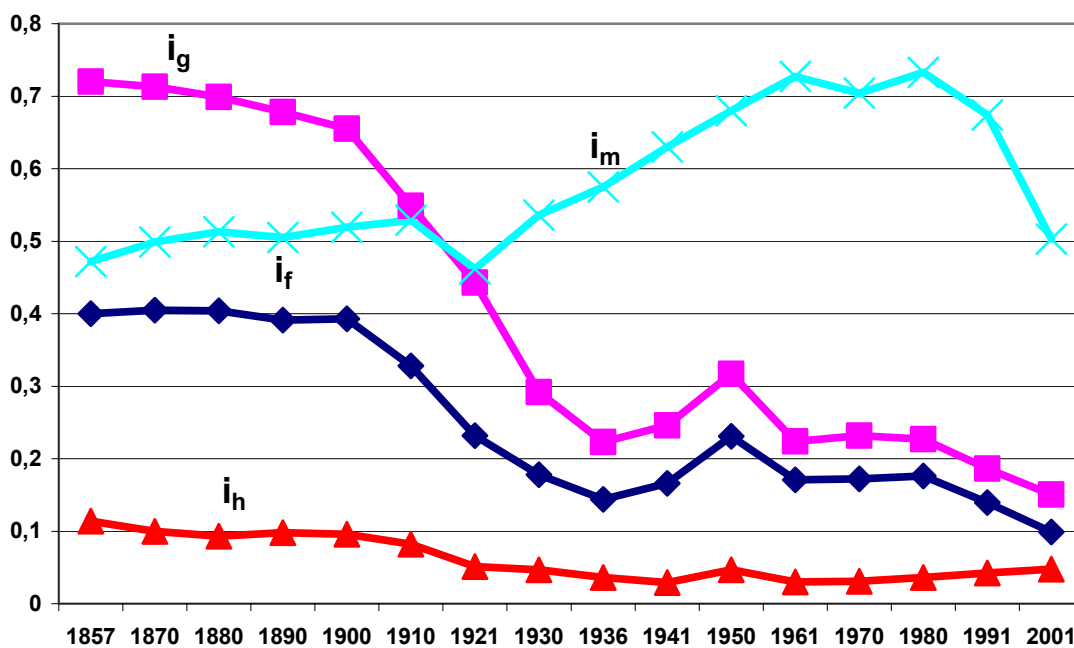
Figure 4. Percentage of illegitimate births in Prague, 18th century



2. Period 1830-1950.

The epoch of demographic revolution with low nuptiality level and relatively higher level of extra-marital fertility. It was period with great differences between Czech and German speaking population – Regions with higher levels of illegitimate fertility were some ones of German speaking population and Prague with high number of female service. With family limitation diffusion and marital fertility fall, extra-marital fertility decreased, too. Regional differences disappeared only with the resettlement of German population from Bohemia after 1945.

Figure 5. Changes in the structure of fertility, Czech Republic 1857-2001



3. Period between 1950 and 1990

There was a period with high nuptiality in the young age. The extra-marital fertility was reduced, some symptoms of step-up were apparent since 1980 and have been corresponding to a decrease of nuptiality.

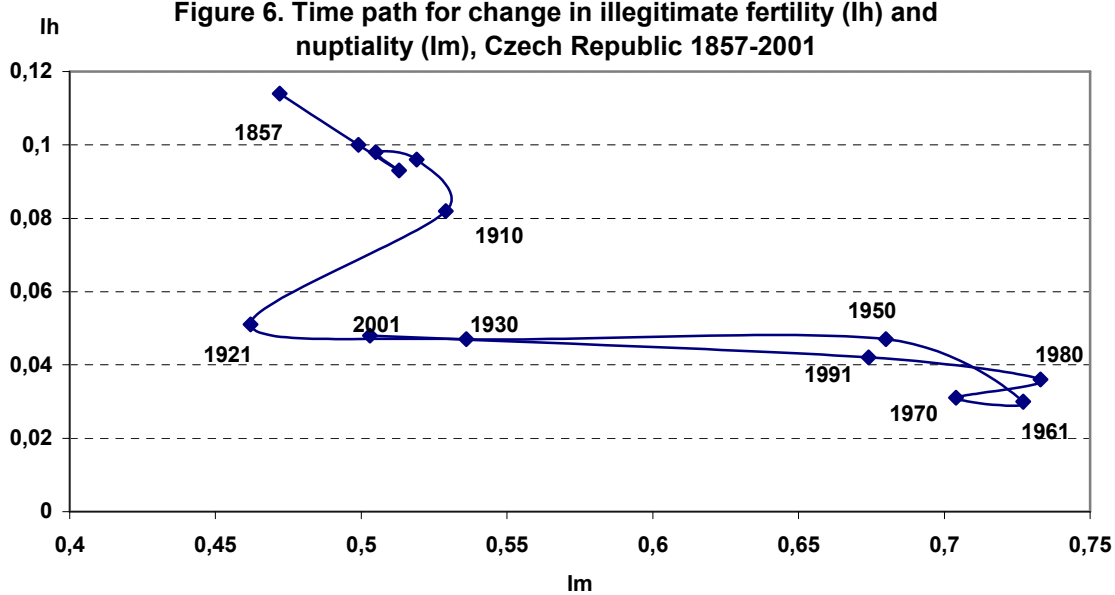
4. Period since 1990

Since 1990 the percentage of births out of wedlock rises. It happens under circumstances of extremely low nuptiality and marital fertility and non-existent taboo on sexual intercourse outside marriage. The regional differences indicate social differences in demographic reproduction, as the districts with extremely high percentage of extra-marital fertility are the districts with a high level of unemployment, low percentage of people with higher education, etc. In spite of a high percentage of births out of wedlock, the level of extra-marital fertility remains low.

Tab. 1 Variations in extra-marital fertility (Ih), Czech Republic 1880-2001

Ih	Percentage of districts											
	1880	1890	1900	1910	1921	1930	1950	1961	1970	1980	1991	2001
0,000-0,019							16,6	36,8	28,9	28,9		
0,020-0,039				2,7	37,3	31,8	48,1	39,5	42,1	42,1	61,8	36,4
0,040-0,059	12,6	8,7	11,8	32,0	34,0	37,2	11,0	9,2	15,8	15,8	21,1	39,0
0,060-0,079	29,1	26,0	36,0	29,9	12,7	17,6	5,5	6,6	11,8	11,8	10,5	15,6
0,080-0,099	30,7	33,1	21,3	16,3	10,0	9,5	5,5	6,6	1,3	1,3	6,6	9,1
0,100-0,119	9,4	14,2	13,2	8,2	4,0	2,0	8,8	1,3				
0,120-0,139	6,3	5,5	5,9	5,4	1,3	1,4	4,4					
0,140-0,159	6,3	5,5	4,4	2,7	0,7	0,7						
0,160-0,179	1,6	0,8	2,2	0,7								
0,180-0,199	0,8	3,1	2,2	1,4								
0,200+	3,1	3,1	2,9	0,7								
Altogether	100	100	100	100	100	100	100	100	100	100	100	100
Number of districts	127	127	136	147	150	148	181	76	76	76	76	77
Average	0,093	0,098	0,094	0,077	0,053	0,054	0,046	0,032	0,032	0,036	0,042	0,049

Figure 6. Time path for change in illegitimate fertility (Ih) and nuptiality (Im), Czech Republic 1857-2001



Tab. 2. Variations in extra-marital fertility (percentage of births out of wedlock), CR 1880-2001

% of extra- marital birth	Percentage of districts			
	1880	1910	1961	2001
0-4	2,19	1,89	71,05	0,00
5-9	48,91	50,31	19,74	0,00
10-14	30,66	28,93	9,21	11,69
15-19	11,68	15,72		35,06
20-24	3,65	1,89		22,08
25-29	2,13	0,58		10,39
30-34				5,19
35-39				7,79
40-44				5,19
45-49	0,79	0,68		1,30
50-54				1,30
celkem	100,00	100,00	100,00	100,00